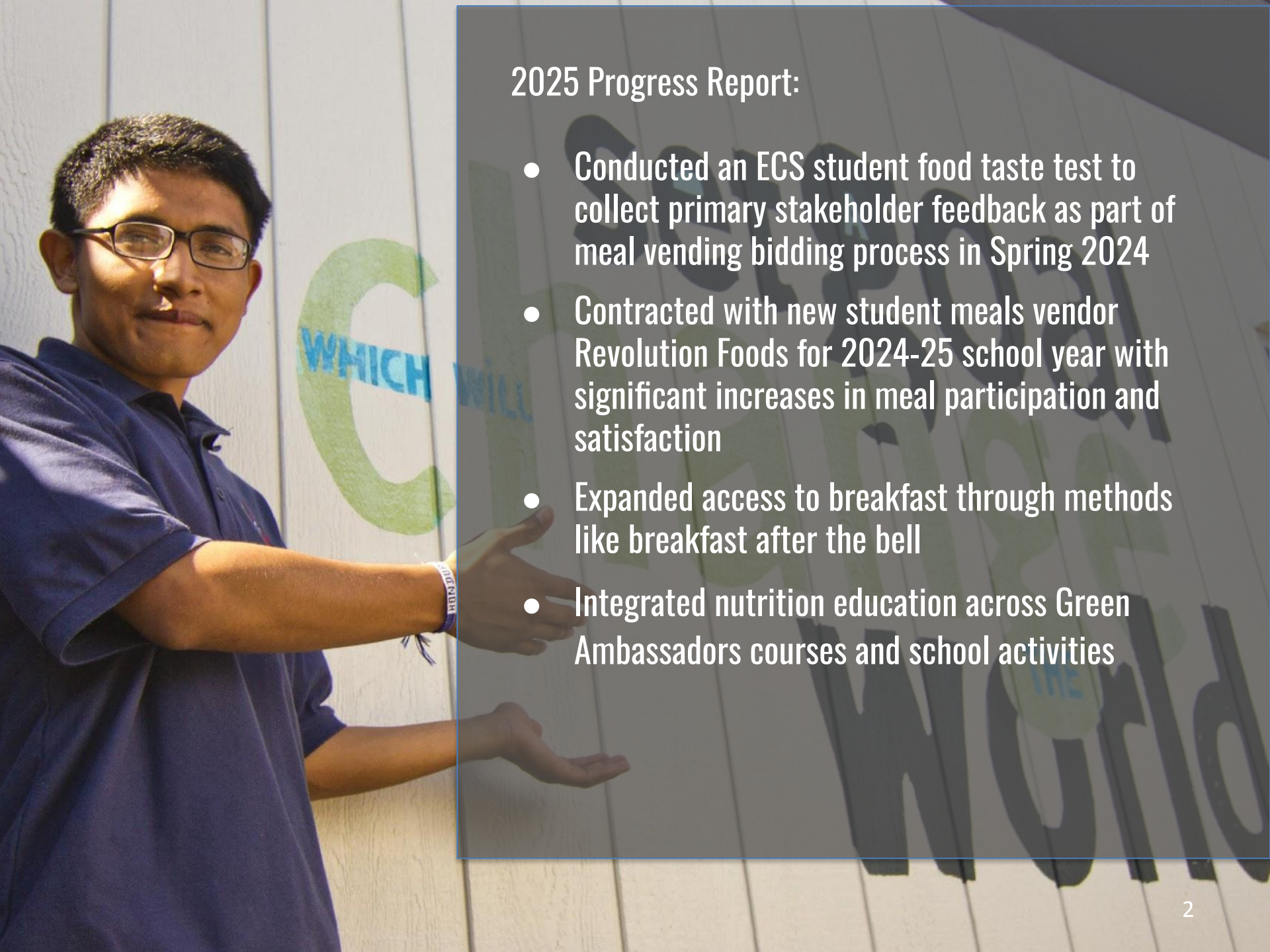


ECS 2025 Triennial Wellness Policy Assessment Report

2025 Progress Report and Policy Assessment
May 2025





2025 Progress Report:

- Conducted an ECS student food taste test to collect primary stakeholder feedback as part of meal vending bidding process in Spring 2024
- Contracted with new student meals vendor Revolution Foods for 2024-25 school year with significant increases in meal participation and satisfaction
- Expanded access to breakfast through methods like breakfast after the bell
- Integrated nutrition education across Green Ambassadors courses and school activities

2025 LOCAL SCHOOL WELLNESS POLICY ASSESSMENT

Local School Wellness Policy: ECS Wellness Policies on Physical Activity and Nutrition (redlined draft)

Assessment Tool: WellSAT Policy (Rudd Center)

Completed May 2025 by: Jeremiah David, Director of Compliance & Operations

Detailed Information:

- [2025 Triennial Assessment Scorecard](#)
- [About the WellSAT Policy Assessment Tool](#)

FEDERAL REQUIREMENTS

Total Comprehensiveness: 100%

Total Strength: 83%

NUTRITION ENVIRONMENT AND SERVICES

Total Comprehensiveness: 92%

Total Strength: 77%

NUTRITION EDUCATION

Total Comprehensiveness: 100%

Total Strength: 100%

PHYSICAL EDUCATION AND PHYSICAL ACTIVITY

Total Comprehensiveness: 54%

Total Strength: 46%

EMPLOYEE WELLNESS

Total Comprehensiveness: 100%

Total Strength: 100%

INTEGRATION AND COORDINATION

Total Comprehensiveness: 100%

Total Strength: 0%

OVERALL ECS SCORE

Total Comprehensiveness: 92%

Total Strength: 67%

In Rudd Center sample of 50 school districts around the country, the average comprehensiveness score was 54% and the average strength score was 33%.



POLICY REVISION FOCUS AREAS

FOCUS AREA

PROPOSED CHANGES

Nutrition Environment and Services

- Formally describe ECS's commitment to operating and promoting the School Breakfast Program (NES1)
- Insert clear language about informing families that ECS offers free meals under Provision 2 (NES3)

Federal Requirements

- Align food service staff training language with USDA Professional Standards (FR5)
- Add a policy statement that ECS will revise the LSWP based on findings from each triennial assessment (FR18)

Integration and Coordination

- Formally establish the School Health Council as an active, standing body that meets at least once per year



THANK YOU!