

Environmental Charter Schools

Safe Return to In Person Instruction

2021-2022 School Year



January 21, 2022

In-Person instruction guidelines for families and staff during COVID-19. This is a fluid working document that may be adjusted as guidance changes.

TABLE OF CONTENTS

- 1 Table of Contents
- 2 Welcome Back Message
- 3 COVID-19 Health & Safety Protocols/Measures Physical
- 4-5 Distancing & the School Day
- 6 Social Emotional & After School
- 7 Vaccinations, Volunteers/Guests, & COVID-19 Testing
- 8 COVID-19 Protocols & Procedures
- 9-11 Quarantine Guidelines

MISSION

ENVIRONMENTAL CHARTER SCHOOLS

To reimagine public education in low-income communities of color to prepare conscious, critical thinkers who are equipped to graduate from college and create a more equitable and sustainable world.



WELCOME BACK!



Dear ECS Family,

We are so grateful that all of our students are back on campus for in person instruction. This year we have dedicated a great deal of our time and resources to ensure the health and safety of our students, families, and staff members. Over the course of the pandemic, we have been in regular communication with the Los Angeles County Department of Public Health in preparing our schools and are confident that we are implementing all necessary safety measures.

We hope that you will find this guide useful, as it outlines everything that you need to know in preparation for a safe and healthy return to full in person learning.

On behalf of ECS Board of Directors and our leadership team, I welcome each and every one of you back to school and thank you for your patience and commitment to Environmental Charter Schools.

With respect and appreciation,

Farnaz Golshani Flechner

Board of Directors

Anthony Jowid, Board President
Ken Deemer, Board Vice President
Dr. Madhu Chatwani, Board Member
Dr. Denise Berger, Board Member
Kennedy Hilario, Board Member
Jenina Ramirez, Board Member
Zena Fong, Board Member

ECS Administration

Farnaz Golshani Flechner, CEO
Danielle Kelsick, Chief Academic Officer
Alison Diaz, Founder and Director of Growth & Sustainability
Jeremiah David, Director of Operations and Compliance
Jennifer Fenton, Director of Health and Safety
Beth Bernstein Yamashiro, Director of Principal Development
Sarah Jamieson, Director of Human Resources
Julie Vo, Director of Development
Tracy Bondi, Director of Finance

Safety First: Health Screening

Screening at Home:

Self-screening should be done prior to arriving at school using the ECS RUVNA COVID Daily Symptom Screener that is emailed to you each morning.



All individuals with these symptoms should stay home: fever (100.4 or higher), cough, diarrhea, vomiting, shortness of breath, muscle or body aches, new cough (different from baseline) or loss of taste or smell.

If you are not vaccinated and have had close contact with a person known to be infected with COVID-19 in the last 5 days, please stay home.

Personal illness, quarantine, and COVID-19 illness or symptom related absences will be excused.

Arriving at School:

If student has a cell phone they should show the Daily Symptom Screener.

Parents & visitors will have limited access to the school campus. Students will be picked up at the gate, Parents will not be permitted to walk students to & from the classroom.

Signage is placed throughout the campus to remind students & staff about masking, physical distancing & hand washing to help promote healthy hygiene practices & reminders to stay home when ill.

If in doubt, please stay at home.

SAFETY MEASURES

- Students and staff are required to wear face coverings indoors and outdoors (N95, KN95 or Surgical) except when eating and drinking
- Students are encouraged to bring their own water bottles which can be refilled
- Outside space will be used for lunchtime and other activities, when possible.
- Air filtration systems have been enhanced to improve indoor air quality.
- Staff are encouraged to keep classroom windows and doors open.
- Students and staff are encouraged to frequently wash hands and use sanitizer.



Environmental
Charter Schools

IN THE CLASSROOM



3 FEET
←————→
Whenever Possible



Physical distancing indoors will limit the spread of the virus. Schools will adhere to the following strategies to maintain physical distancing as much as possible:

- During regular school hours, school sites will restrict non-essential visitors.
- Non-essential furniture has been removed from classrooms to allow maximum space for students and staff.
- Staff will assist students in minimizing congregating when outside of the classroom or on the playground.

ALL Volunteers and Service Providers must provide proof of vaccination and a negative covid test, in order to enter campus.

DURING THE SCHOOL DAY



Environmental Charter Schools will offer FREE breakfast and lunch for ALL students at ALL sites for the entire 21-22 School Year. Meal service will be individually plated meals. Meals will be eaten outdoors.

Staff will assist students in minimizing congregating when outside of the classroom or on the playground.

HOW TO WEAR A MASK

All staff, students, and visitors are required to wear a face covering while at school (with exemptions per CDPH face mask guidance), both indoors and outdoors. Masks may be removed when eating, outdoors, and 6 FT away from others.

Parents are encouraged to provide a second face-covering for school each day in case the one a child is wearing gets soiled or lost. If a student forgets their face covering, the school will provide a surgical face covering.

What type of mask should my student wear?

Per CDPH guidance students and staff must wear N95, KN95 or Surgical Masks to school every day.

When choosing a mask, choose one that fits snugly, breathes easily, and is of an appropriate size that covers their nose and mouth.

Do not wear masks with exhalation valves/vents or masks that are too thin, such as most neck gaiters. You may choose to wear a cloth mask over a surgical mask.

Please make sure that your child's mask covers both their nose and their chin.



SOCIAL-EMOTIONAL RESOURCES

Throughout the pandemic, administrators, teachers, and staff supported the social-emotional wellness of students, their families, and our staff members. As we reopen school this year, there are additional counselors and mental health professionals on our school campuses.

To access an ECS Family Member Counseling Referral Form Click on the below links:

[ECHS Lawndale](#)

[ECHS Gardena](#)

[ECMS Inglewood](#)

[ECMS Gardena](#)



ADDITIONAL RESOURCES

If your student needs immediate assistance, call 911 or the Suicide Prevention Hotline at 1-800-273-8255. LA County Department of Mental Health at 1-800-854-7771.

OTHER RESOURCES

- [211 - Community Connect](#)
- [National Alliance on Mental Illness \(Mental Health and Youth Statistics\)](#)
- [National Institute of Mental Health](#)
- National Crisis Line – 1-800-273-8255

AFTER SCHOOL CARE

Both of our Middle Schools and ECHS Gardena offer after school programming through our partnership with Woodcraft Rangers.

ECHS Lawndale provides campus-based after school programming. To sign your student up for after school programming, please contact the main office of your school.



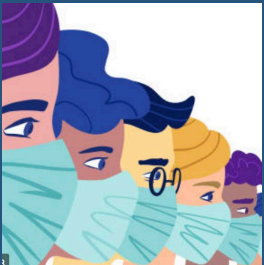
WORKING TOGETHER: COMMITMENT TO HEALTH & SAFETY

VACCINATIONS

In order to best protect students and staff as California starts the school year fully in-person, the California Department of Public Health (CDPH) issued a new [public health order](#) requiring all school staff to either show proof of full vaccination (by October 15) or be tested at least once per week.

COVID-19 vaccination is strongly recommended for all eligible people in California, including teachers, staff, students, and adults sharing homes with members of our K-12 communities. Vaccination helps to ensure schools in California stay open and remain safe and healthy.

Vaccine information can be found on the Los Angeles County Department of Public Health website, which is readily available at no cost. Vaccine opportunities will be available on campus periodically throughout the year.



VOLUNTEERS & GUESTS

Volunteers, contractors, service providers and guests will be required to show proof of vaccination and a recent negative test in order to gain access to any school site. Volunteers will also participate in ECS Testing, as needed.

COVID-19 TESTING

ECS will provide free PCR or Rapid Antigen testing for all students and staff throughout the school year, prioritizing students who are not vaccinated.

All staff will be tested weekly. Staff who are not vaccinated will be tested twice a week.

COVID-19 PROTOCOL & NOTIFICATION

Should a positive COVID-19 case occur at a school site, designated school staff will follow the protocols below, per LADPH:

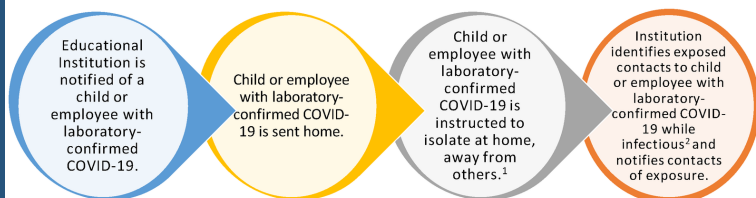
- Designated school staff will notify local health officials, staff, and families immediately of any case of COVID-19 while maintaining confidentiality in accordance with the Families Education Rights and Privacy Act (FERPA).
- Notify those who have had close contact with a person diagnosed with COVID-19 to self-monitor for symptoms and test per DPH guidelines. These notifications will **occur as** written correspondence (and by phone, if needed) which will include, if known:
 - Date of potential exposure.
 - Information on incubation period and safety protocols that help to limit exposure (hand washing, face coverings, physical distancing).
 - Return to school protocols and school staff contact information for questions.
 - Resources needed for students to participate in short term independent study.
- In addition, ECS will determine with direction from LACDPH, if the number of positive COVID-19 cases may lead to the closure of a classroom, multiple classrooms, or even a school.

Students with Symptoms While at School

- Students will go to a designated isolation area until they can be picked up by a parent or guardian.
- If the exposure happened in a school, all persons that were identified as close contacts will be tested and parents will be informed.
- ECS, per LACDPH guidelines, will determine a course of action should a student or staff member test positive for COVID-19.
- Following LACDPH Pathways, ECS will complete contact tracing on confirmed positive cases.
- If the student's symptoms are not consistent with possible COVID-19, but there is still concern, a note by a doctor should be provided to the school in order for them to return .

Please be sure to have updated emergency contacts in PowerSchool, as parents should be prepared to pick up their student(s) immediately in the instance they develop COVID-19 symptoms while at school.

Guidance for Child or Employee with Laboratory-confirmed COVID-19 at an Educational Institution



¹ Persons with laboratory-confirmed COVID-19 should isolate until fever free for 24 hours without fever reducing medication, improved symptoms, and 10 days from beginning of symptoms (or 10 days from test date, if no symptoms).

² The infectious period for an infected person is 48 hours before symptom onset (or test date for persons with no symptoms) until the infected person is no longer required to be isolated.

To Review the full Screening & Exposure Decision Pathways for Symptomatic Persons issued by LACDPH, please click on link:
[Pathways Document](#)

COVID-19 Quarantine Guidelines

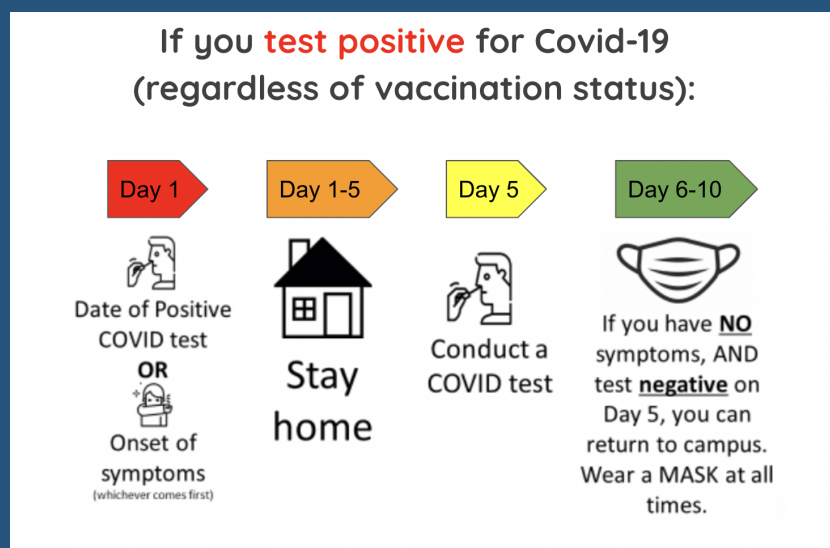
WHO NEEDS TO QUARANTINE & FOR HOW LONG

Quarantine periods will vary based on whether or not individuals are vaccinated, if they have symptoms, and/or if they have been exposed to someone who has tested positive for COVID. As this is extremely complex, we have provided a graphic flowchart on the next page that explains who needs to quarantine and for how long.

STUDENTS RETURNING TO SCHOOL

Students sent home with symptoms will need to remain home for 10 days unless the school receives the following:

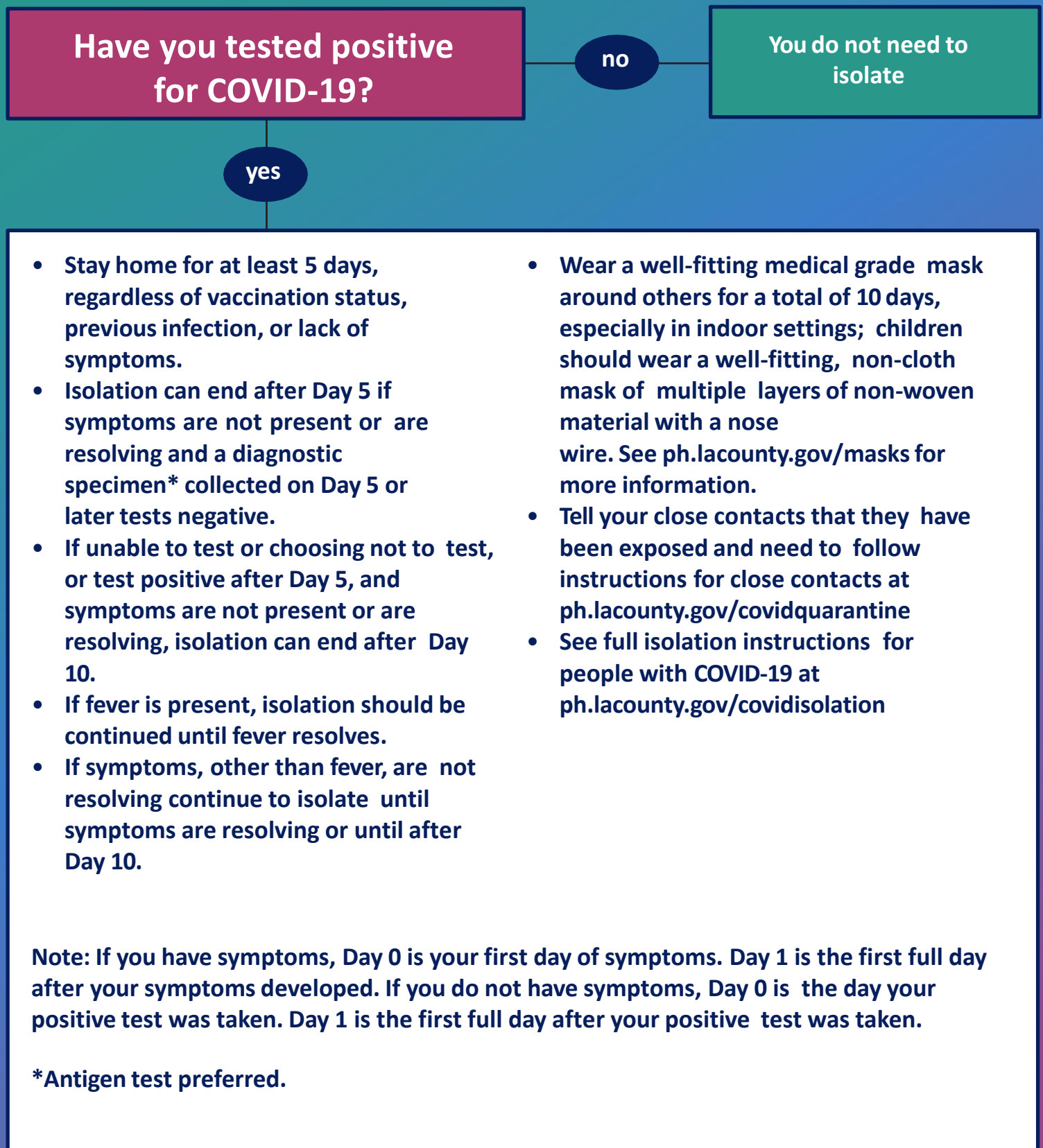
- A negative PCR or Rapid Antigen COVID-19 test, that was taken after day 5 of quarantine
- A note from your child's physician stating that symptoms are not COVID-related and the child is able to return to school (when symptoms are improved).



COVID-19 Related Terms

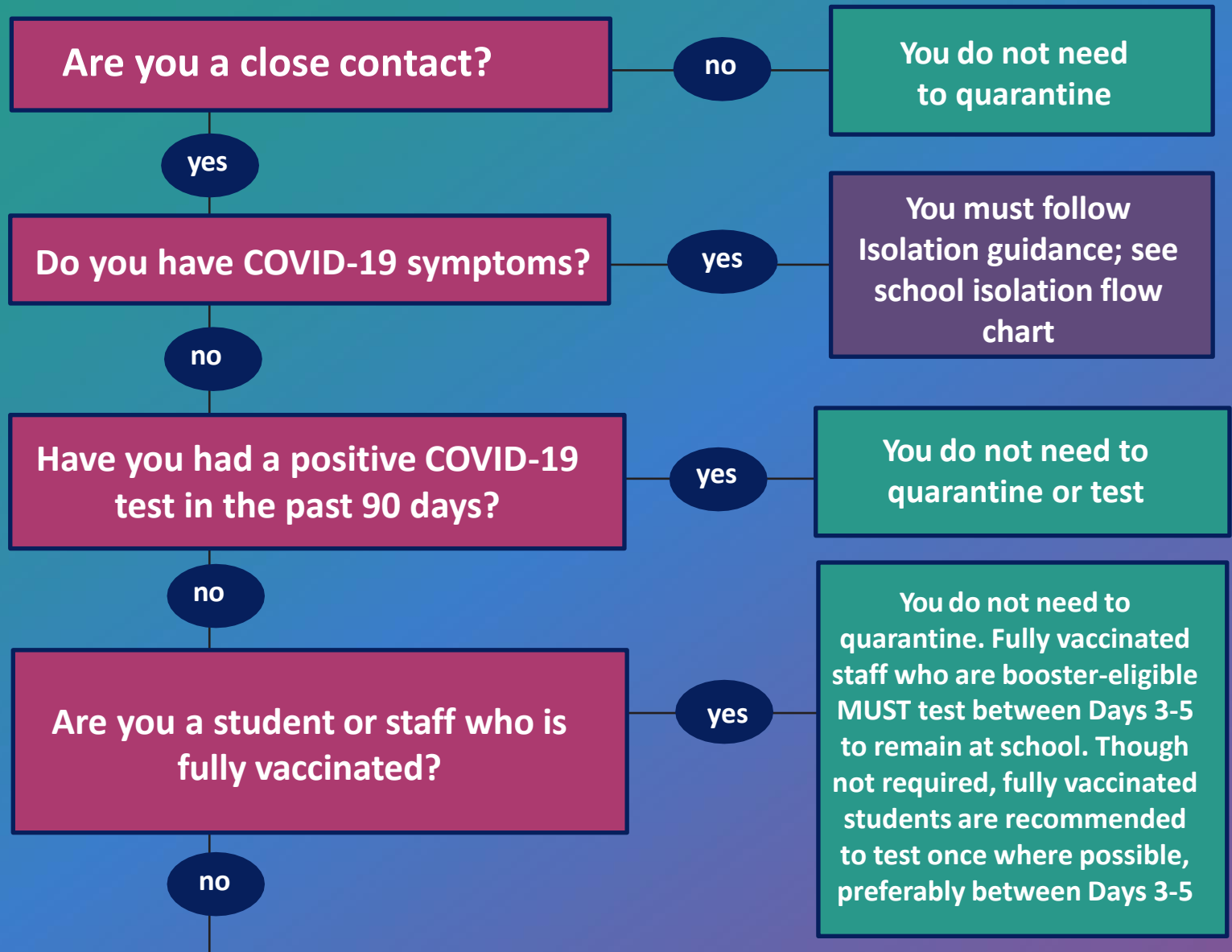
- **Close Contact** is an individual who was within 6 feet of the infected person for over 15 minutes within a 24-hour period.
- **Exposure** is when you come into close contact with someone diagnosed with or suspected to have COVID-19.
- **Home Isolation** is required when a person is infected or sick with COVID-19 and should stay away from people who are not infected.
- **Home Quarantine** is required for anyone who might have been exposed to COVID-19 and needs to stay away from others.

SCHOOL ISOLATION FLOW CHART



For more information and to view the latest version, visit:
ph.lacounty.gov/EducationToolkitTK12 1.19.22

INDIVIDUAL CONTACT TRACING SCHOOL QUARANTINE FLOW CHART



You must quarantine

You may end your quarantine after either:

- Ten (10) full days from your last known contact. Activities resume on Day 11.

OR

- Five (5) full days from your last known contact if you have a negative viral test collected on or close to Day 5. Activities may resume as early as Day 6.

Some unvaccinated students with an exposure may remain in school and participate in school activities if they meet the criteria below:

- They do not have symptoms.
- They had a mask-on-mask school exposure and test negative at least once, preferably on a specimen collected on or around Days 3-5. If testing resources are available, testing twice is recommended, preferably immediately after exposure notification and again on or around Day 5.
- They wear a well-fitting mask at all times at school, indoors and outdoors, except when eating or drinking.
- They monitor for symptoms for 10 days. If they have symptoms, they must follow isolation guidance and test immediately.

For more information and to view the latest version, visit:



COUNTY OF LOS ANGELES

Returning to School 2021-22

What to Expect when you come back

All Environmental Charter Schools sites are ready for a return to in-person instruction, in accordance with California Department of Public Health's [School Reopening Guidance](#)



Face Coverings

- ✓ Masks required indoors and outdoors for all students and staff, except when eating and drinking
- ✓ Schools will provide face covering to any student who fails to bring one to school



Hand Hygiene

- ✓ Teach and reinforce washing hands, avoiding contact with one's eyes, nose, and mouth, and covering coughs and sneezes among students and staff.
- ✓ Promote hand washing throughout the day, especially before and after eating, and after sharing supplies or playground equipment



Around Campus

- ✓ Extracurricular and After School Programs to be offered with health and safety modifications.
- ✓ Physical distancing, masking and other safety measures are in place.
- ✓ Maximum physical distance is recommended as well as use of outdoor spaces during mealtimes when possible
- ✓ Increased ventilation and CO2 monitoring



Testing

- ✓ Free Rapid Antigen and PCR testing for all students throughout the year, prioritizing students who are not vaccinated.
- ✓ Free Rapid Antigen and PCR testing for all staff weekly, and twice a week for staff who are not vaccinated.



Reducing the Risk

- ✓ Contact Tracing
Positive cases will be investigated to prevent further spread of COVID-19 should cases occur.
- ✓ Limiting visitors
All nonessential visitors, volunteers and activities involving external groups or organizations with people who are not fully vaccinated should be limited



Required

- ✓ Immunizations
State immunization requirements for admission to school remain in place.
- ✓ Reporting
Schools are required to report COVID-19 cases to local health department, and will assist local public health with contact tracing. School safety plans for all schools that receive federal funding must be posted, and reviewed and amended every six months



*More on California's Blueprint for a Safer Economy at covid19.ca.gov



Thank you for reading this guide and being a part of the ECS Community. Please don't hesitate to reach out to your campus with questions.



Environmental
Charter Schools

